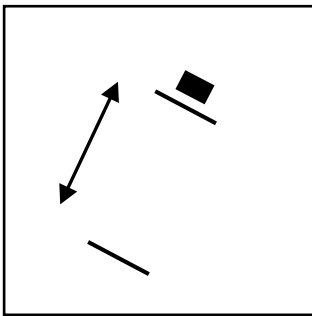


DPF/Catalyst Cleaner

DPF/Catalyst Cleaner is usable for all closed particulate filter systems. Check the oil level before cleaning. Oil change is necessary if oil dilution is performed with diesel.

The DPF/Catalyst Cleaner dissolves and removes all contamination and soot residues from the particulate filter and the catalyst no disassembling required. The product eliminates any performance decrease or disruption caused by contaminated particulate filter and catalyst. DPF/Catalyst Cleaner restores the complete function of the diesel particulate filter and catalyst.

1.



The motor must be in hot operation condition. Shake the can well before use! (Approx. 1 min)

2.



Dismantle the temperature, pressure sensor or access port on the DPF/Catalyst.

3.



Insert the probe through the opening.

4.



Spray the cleaner with the probe inserted into the particulate filter/catalyst in 5-second intervals until the DPF/Catalyst is proper filled with the foam.

5.

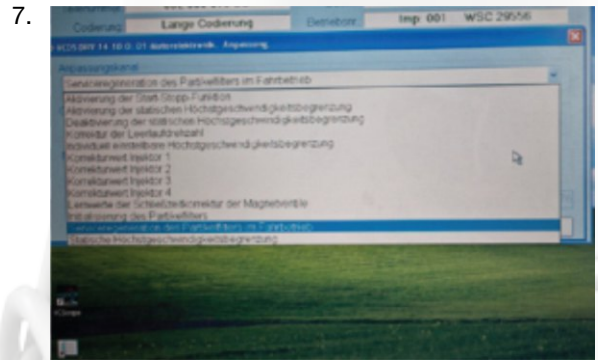


Remove the probe.

Clean - Restore - Protect



Close the opening after application.



Restart the regeneration process through a work-shop tester. Finally remove the faulty memory entry or delete existing errors.

Afterwards perform a test drive consisting of about 20 minutes.

For an optimized regeneration we recommend to add the DPF Clean (8101) into the fuel tank after doing the test drive. For petrol engines we recommend Catalyst Cleaner (7001).

Befor-after



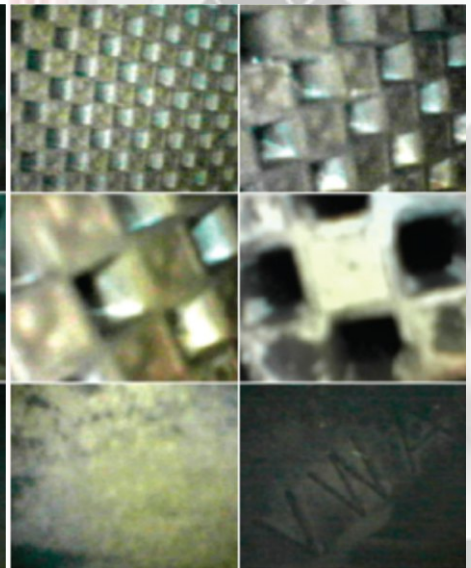
Probe before cleaning



Probe after cleaning



Particulate filter before cleaning



Particulate filter after cleaning - Protect